

Vehicle Drone Detector

Ruggedized and passive Radio Frequency-based drone detection for On-The-Move-Missions.

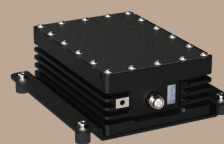


Scan to see
all products

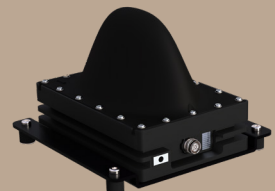


Distinctive advantages

- **VERSATILE DEPLOYMENT**
Compact and rugged for mounting on vehicles, vessels, masts, or walls, ideal for varied missions.
- **MULTI-MODULAR PERFORMANCE**
Combine Watchdog 150 and 250 for full-spectrum detection, optimizing range and coverage.
- **SEAMLESS INTEGRATION**
Compatible with MyDefence and other Situational Awareness Systems for effortless security integration.
- **MISSION-TAILORED SUPPORT**
Flexible installation and expert advice ensure optimal performance for any operation.



Watchdog
250



Watchdog
150

Watchdog 150 & 250 RF Detectors

The Watchdogs are compact, rugged RF-based devices designed to detect drones and their controllers. Ideal for mobile missions, they can be mounted on land vehicles, sea vessels, masts, or walls.

MyDefence Watchdog 150 enables comprehensive coverage with omnidirectional detection at lower frequencies. The side-mounted Watchdog 250 offers precise 90-degree detection at higher frequencies. They can be installed independently, however multi-modular configuration maximizes performance and extends the range of operating frequencies, ensuring optimal detection and coverage.

Situational Awareness is mission-essential. Integrate with your existing Situational Awareness software or MyDefence IRIS and ARGOS Situational Awareness Software. Installation and integration are possible on a wide range of platforms, and MyDefence offers expert advice for your specific installation needs.



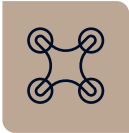
DIRECTION FINDING
With accuracy within 5°



PASSIVE DETECTION
Enables operators to remain undetected



DETECT DRONES & CONTROLLERS
For comprehensive awareness of the threat



EXTENSIVE DRONE LIBRARY
Enables accurate classification and low false positives



SOFTWARE FIELD UPGRADES
Enables product evolution without costly hardware upgrades

Specifications

	Watchdog 150	Watchdog 250
Detection Time	< 10s *	
Detection Range	Up to 3km / 1.86 mile *	Up to 9 km / 5.59 miles *
Detection Frequency Bands	433MHz, 868MHz, 915MHz, 1.2GHz	2.4, 5.2, 5.8 GHz
Coverage Angle	Omnidirectional 360°	Horizontal 90° / Vertical 90°
Direction Finding Accuracy	N/A	5° RMS accuracy
UAS Geolocation	N/A	Multiple systems enable location triangulation
Weight	1.9 kg/ 67.oZ	1.9 kg/ 67.oZ
Dimensions	180 x 180 x 158 mm / 7.09 x 7.09 x 6.22 in.	180 x 180 x 56 mm / 7.09 x 7.09 x 2.2 in.
Operating Temperature	-30°C to 65°C / -22°F to 149°F	
IP Rating	IP68	
Color	Black	
Electromagnetic Compatibility (EMC)	MIL-STD-461F, External Grounding Connection	
Environmental Testing	MIL-STD-810G	
Ruggedized	Designed to withstand vibration and shocks, dust, salt, solar radiation	
Mobile Mounting on Vehicles and Vessels	Top-Mount	Top-Mount or Side-Mount
Communication Interfaces	Ethernet	
Power Supply & Consumption	Power over Ethernet (PoE), < 15 W	
API for Software Integration	ARGOS Server software to IRIS UI and other Situational Awareness Systems	

* Depending on the RF environment & line of sight